

Sustainable Living at EMERSON WAY

Affectionately named the Tea ("T") House, this customizable Classic Farmhouse offers 2,100 s/f of open plan living space, including a "T" with four spacious bedrooms (including 1st floor suite), three baths, bright and airy living space, with convenient access to your deck, outdoor dining and private back yard.

*Year Round Energy
Efficient Comfort.*

*Resilient Design and
Lifetime of Beauty.*

*Engineered for Solar Ready
Combustion Free Living.*



Artist Rendering by Selene Webber LA

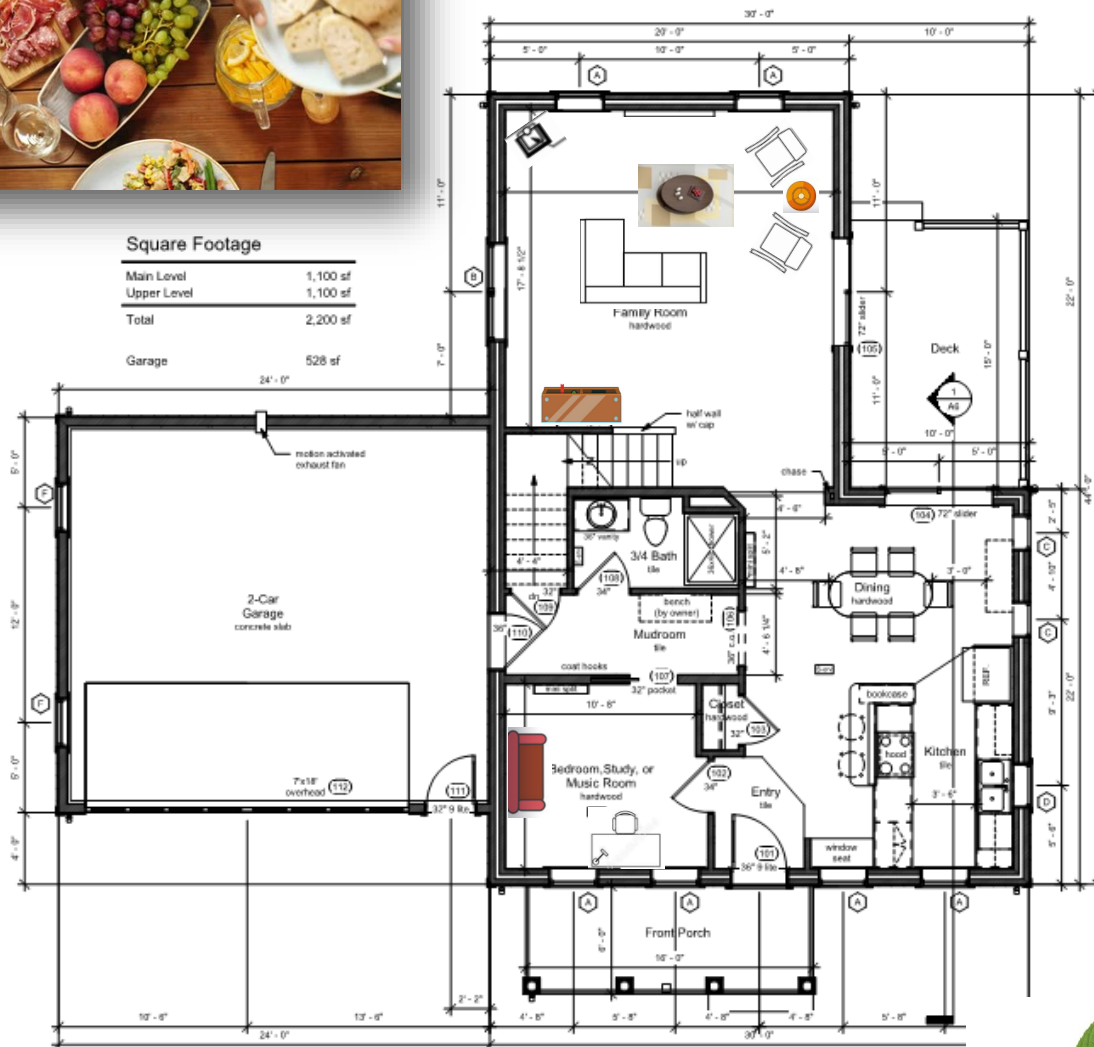


**WRIGHT**
BUILDERS

floor plans
first floor



Main Level	1,100 sf
Upper Level	1,100 sf
Total	2,200 sf
 Garage	 528 sf



Optional parlor stove at owner's expense.

Your new home is bright and airy and
can be arranged to maximize your style and comfort.

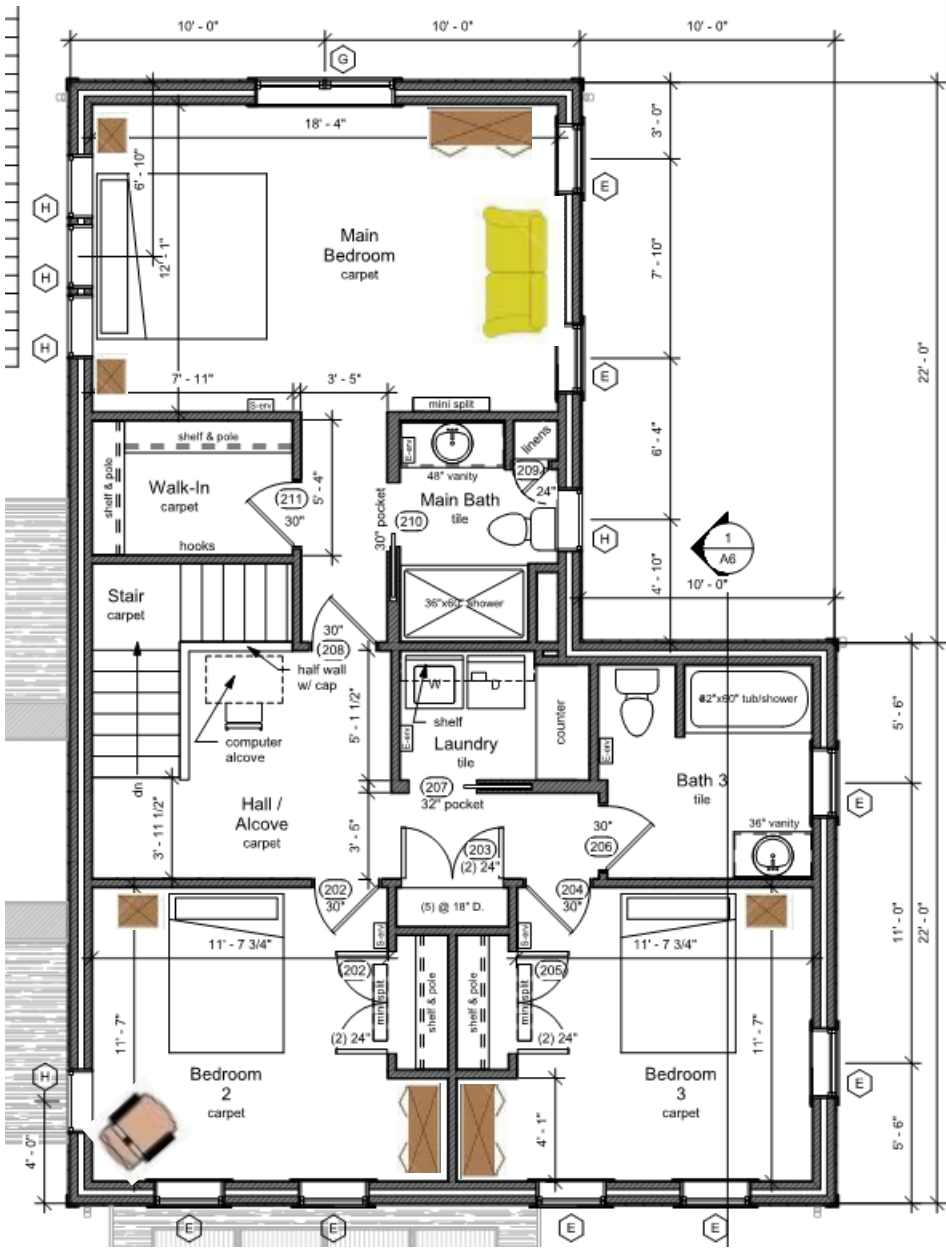


184 Emerson Way

floor plans
second floor

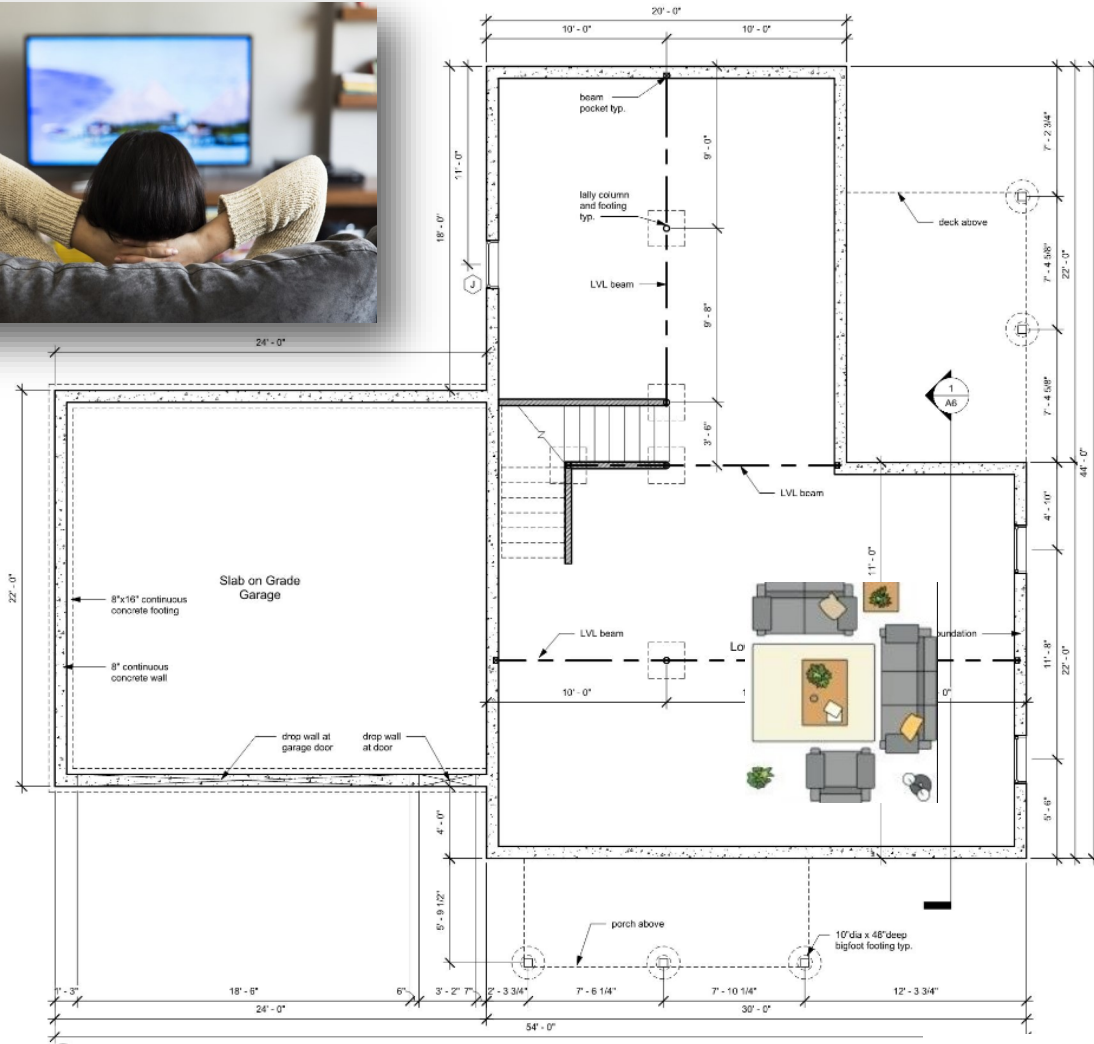


Spacious bedrooms
and 2 full baths.



184 Emerson Way

floor plans
basement



Options to finish space at additional cost.

A roomy basement that could be....
your office, a 5th bedroom or perhaps your media room?



184 Emerson Way

the Wright Builders, Inc.
difference

Very low operating costs achieved by exceeding **ENERGY STAR for Home** standards.

Low HERS rating (40 or less) and state-of-the-art building envelope design, all certified by a third party independent.

Our homes are solar ready so you too can lower your carbon footprint and enjoy savings on utility costs.

Cleaned, refreshed and healthy indoor air with utilization of efficient air exchange systems (**Energy Recovery Ventilation**).

Healthy relative humidity levels in the winter can be maintained for optimal well-being for people, pets and plants.

Drought tolerant and native landscape plantings mean less maintenance and sustainable beauty.

Sustainable practices create long term value for homes which perform well, and will high value and economical for the life of the home.

Satisfaction of knowing that your **long-term investment** is also treading as lightly as possible on the planet while providing daily enjoyment.

Classic design and detailing that has timeless value and appeal.

Minimally vulnerable during power outages because of low infiltration and high insulation, thereby holding their temperature for an extended periods of time.



*Wright Builders, Inc. installs very high efficiency HVAC mini-split systems with a SEER of 20 or greater. The Seasonal Energy Efficiency Ratio (**SEER**) measures air conditioning and heat pump cooling efficiency.*

*A higher **SEER rating** means greater energy efficiency.*



184 Emerson Way

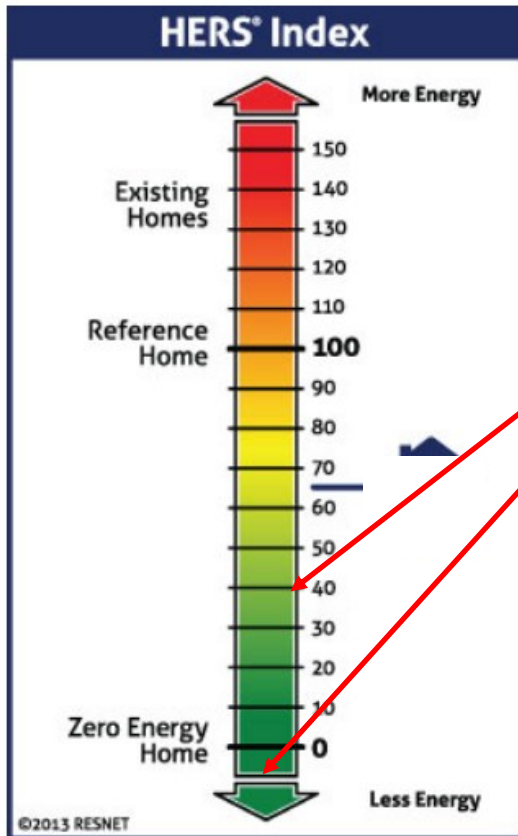
energy savings
features & benefits

Solar ready for optional by owner roof top photovoltaics.

Triple glazed premium vinyl windows are up to a R-5.2, for light and year-round comfort.

ENERGY STAR compliant LED lighting throughout your home saves energy and supports our commitment to sustainable construction.

Ultra high efficiency mini-split VRV heat pump and air-conditioning, SEER 20 or higher.



Highest insulation levels provide reduced indoor temperature fluctuation for greater comfort, energy efficiency and cost savings: **Basement Floor @ R-21.6, basement walls @ R-29, walls @ R-40 and your ceilings @ R-60.**

Your new home will be ENERGY STAR and INDOOR AIRPLUS compliant.

Third party energy rater initial **HERS Rating of 38.**
With photovoltaics, you should achieve 0 net energy consumption.

High efficiency 80 gallon Hybrid heat electric pump hot water heating.

Broan ERV (Energy Recovery Ventilation), with filtration and distribution for fresh, cleaned air throughout.

184 Emerson Way

architectural
& features

EXTERIOR

Our Classic Farmhouse features landscape design by Selene Webber Landscape Design of South Hadley, MA, with meticulously selected plant materials for variety, seasonal color, easy maintenance and year-round enjoyment.

Sited to take full advantage of its southern exposure. This home will be net zero ready.

Enjoy the privacy of your wooded back yard with easy access from your dining and main living space.

Hardieplank™ siding and trim utilizes recycled fiber.

INTERIOR

All non-VOC paints utilized in the interior.

Granite and solid surface counters throughout.

8' ceilings in the living areas.

Red oak flooring in living areas and stairs with Loba—Easy Finish™, a low VOC finish that brings out the natural character of the wood.

Tile flooring in all bathrooms & tiled shower in the main bath.

Carpet selections for your bedrooms.

Abundant basement storage space with egress window (options to finish space at additional cost)

Bonus room option over the garage (additional design and cost).

Stainless steel Energy Star appliances.

Electric cooking with direct ventilation.

Hand crafted Wolf Classic Expression Shaker Cabinetry with solid hardwood components, with self close solid wood dovetail drawers

Toto Drake II™ 1.0 gpm toilets and low flow Watersense fixtures in all locations.

2 car garage with easy open single door.

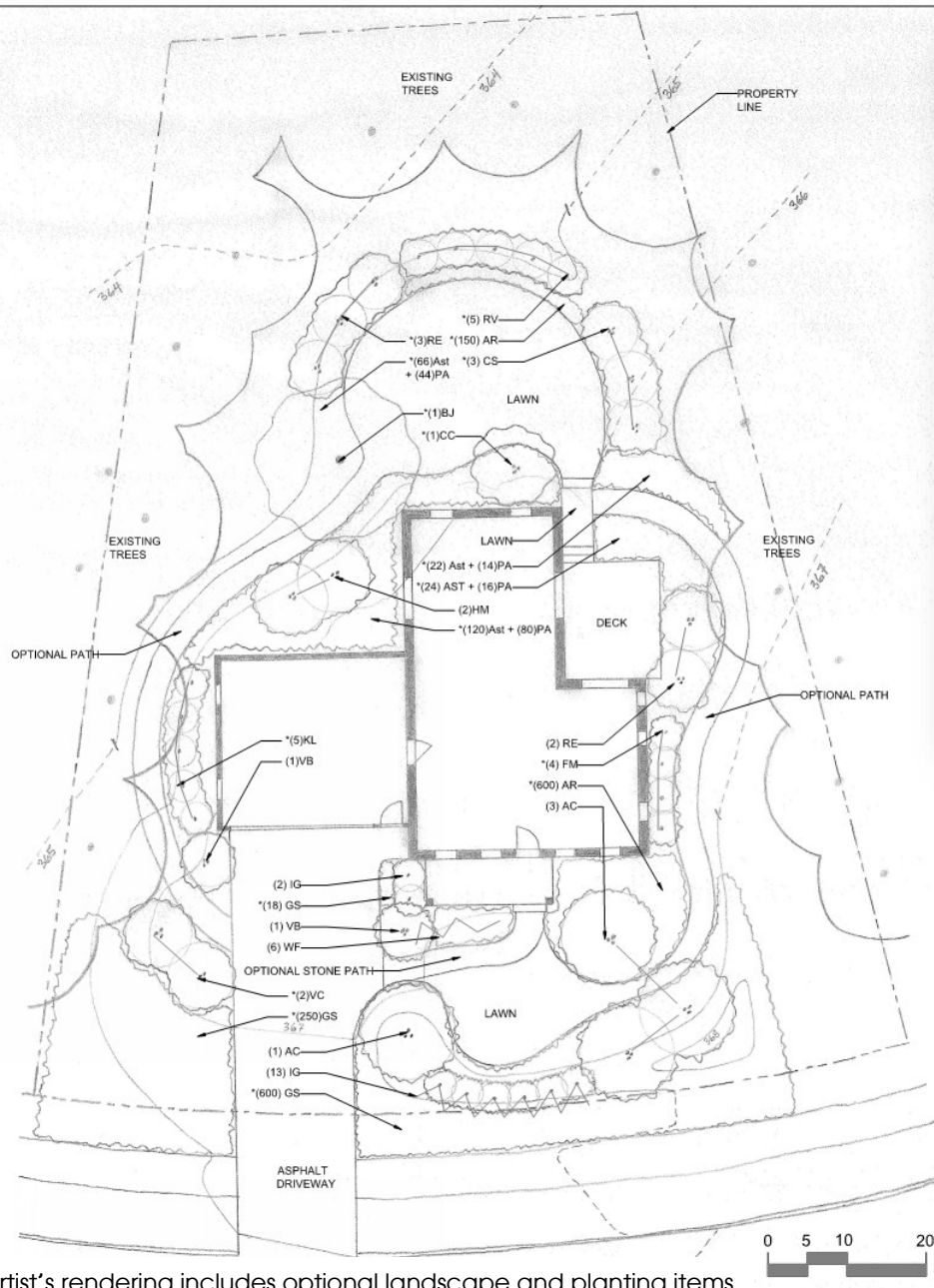
Sustainable interior and exterior materials.

Finish options and upgrades, along with minor interior layout changes are available (at extra cost).



184 Emerson Way

site plan



Artist's rendering includes optional landscape and planting items.



184 Emerson Way

landscape plan



Artist's rendering includes optional landscape and planting items.



WRIGHT
BUILDERS

184 Emerson Way

around the
neighborhood



<http://www.emersonway.com/the-neighborhood.html>


WRIGHT
BUILDERS

184 Emerson Way

around the
neighborhood



EMERSON WAY is ...

Private, quaint, friendly and
close to everything!

to Main Street Northampton | 3.4 miles
to Florence Center | 3.1 miles
to Look Park | 3.2 miles
to Smith College | 2.5 miles



184 Emerson Way

for more
information



David Santos (413) 362-9250

Coldwell Banker Upton Massamont Realtors

david.santos@cbumr.com



UPTON-MASSAMONT REALTORS®



Wright Builders, Inc.

Melissa Caldwell | Director of Sales and Marketing

(413) 586 8287 e.104

wright-builders.com/homes-for-sale

facebook.com/wrightbuildersinc

www.houzz.com/pro/wbiinc/wright-builders-inc

